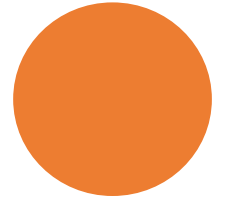
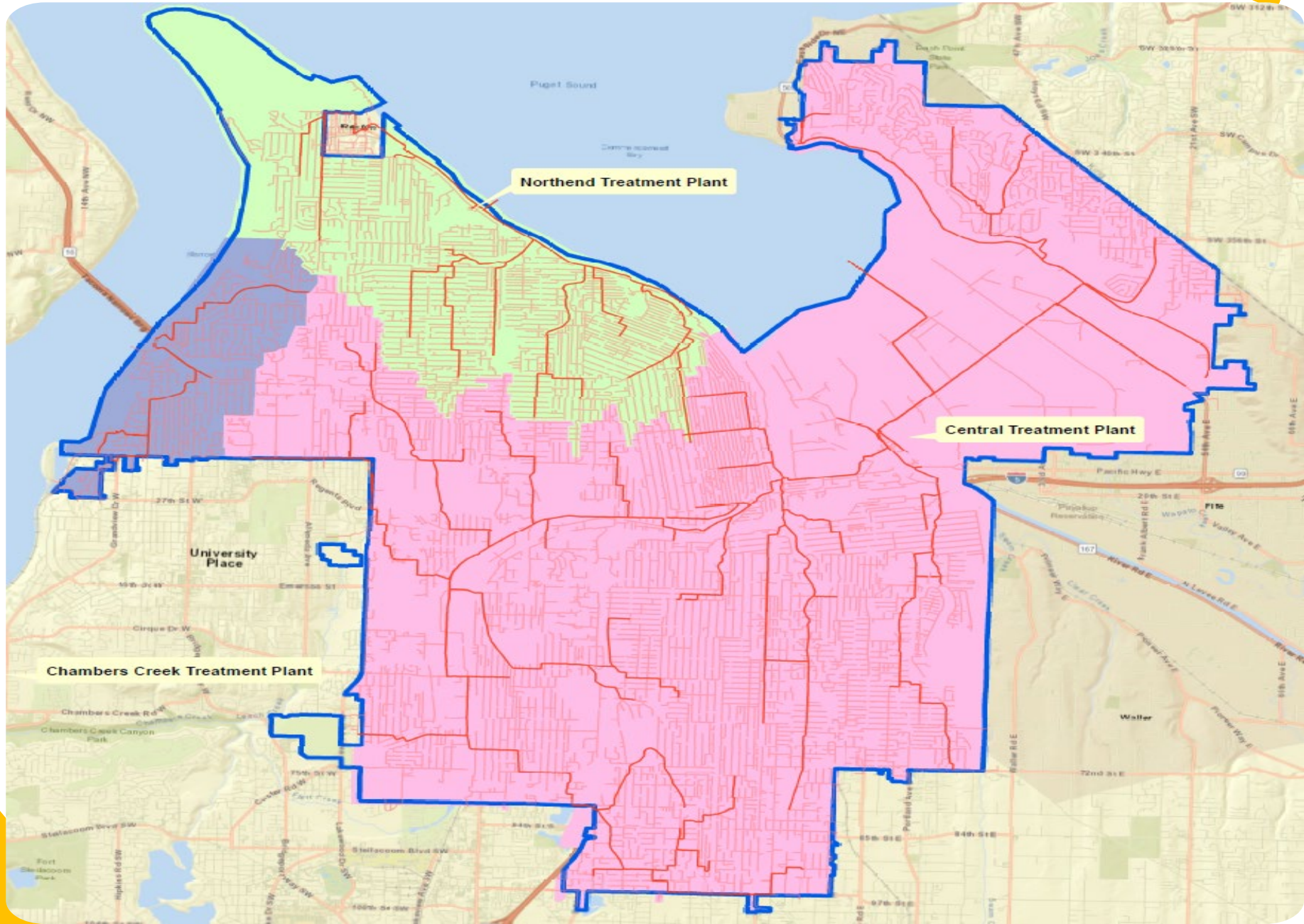


# Environmental Services Department **Wastewater Utility**

# The Wastewater System

- The wastewater system has 17,216 commercial customers and 174,288 residential customers.
- The system consist of approximately 800 miles of pipe, 45 pump stations, 2 treatment plants, 20,000 rim and covers.
- Central Treatment Plant (CTP) was constructed in 1952 and has a permitted maximum monthly flow (average flow for the maximum month) of 60 mgd and a permitted peak hydraulic capacity of 150 mgd. CTP operates continuously 24 hours per day, 7 days per week
- North End Treatment Plant (NETP) was constructed in 1966 and has a permitted maximum monthly flow (average flow for the maximum month) of 7.2 MGD and a permitted peak hydraulic capacity of 15.8 MGD max day. NETP operates continuously 24 hours per day, 7 days per week.





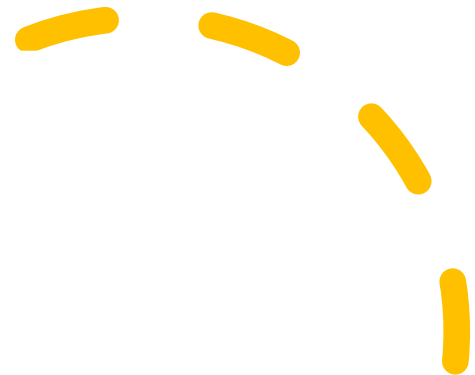
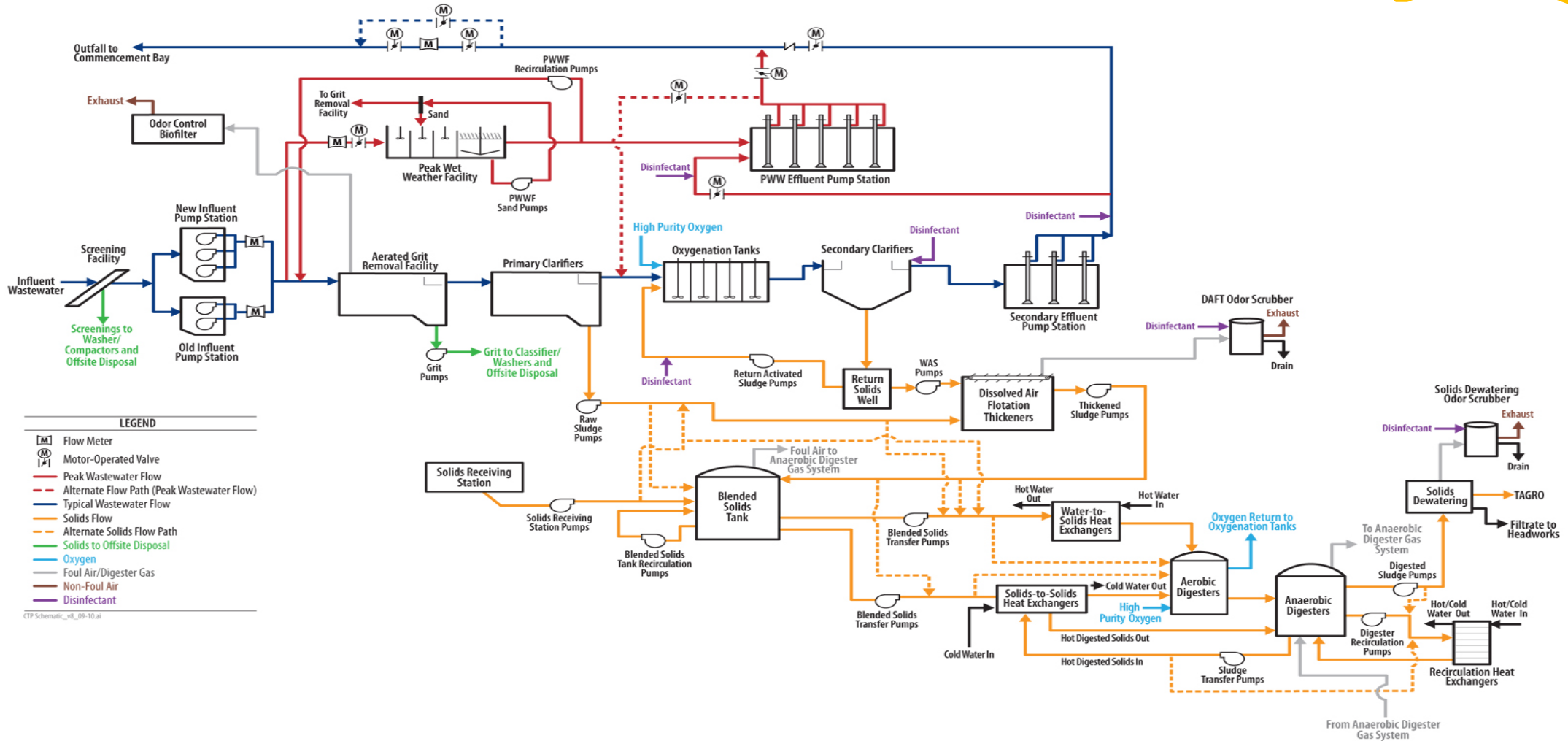
**Northend Treatment Plant**

**Central Treatment Plant**

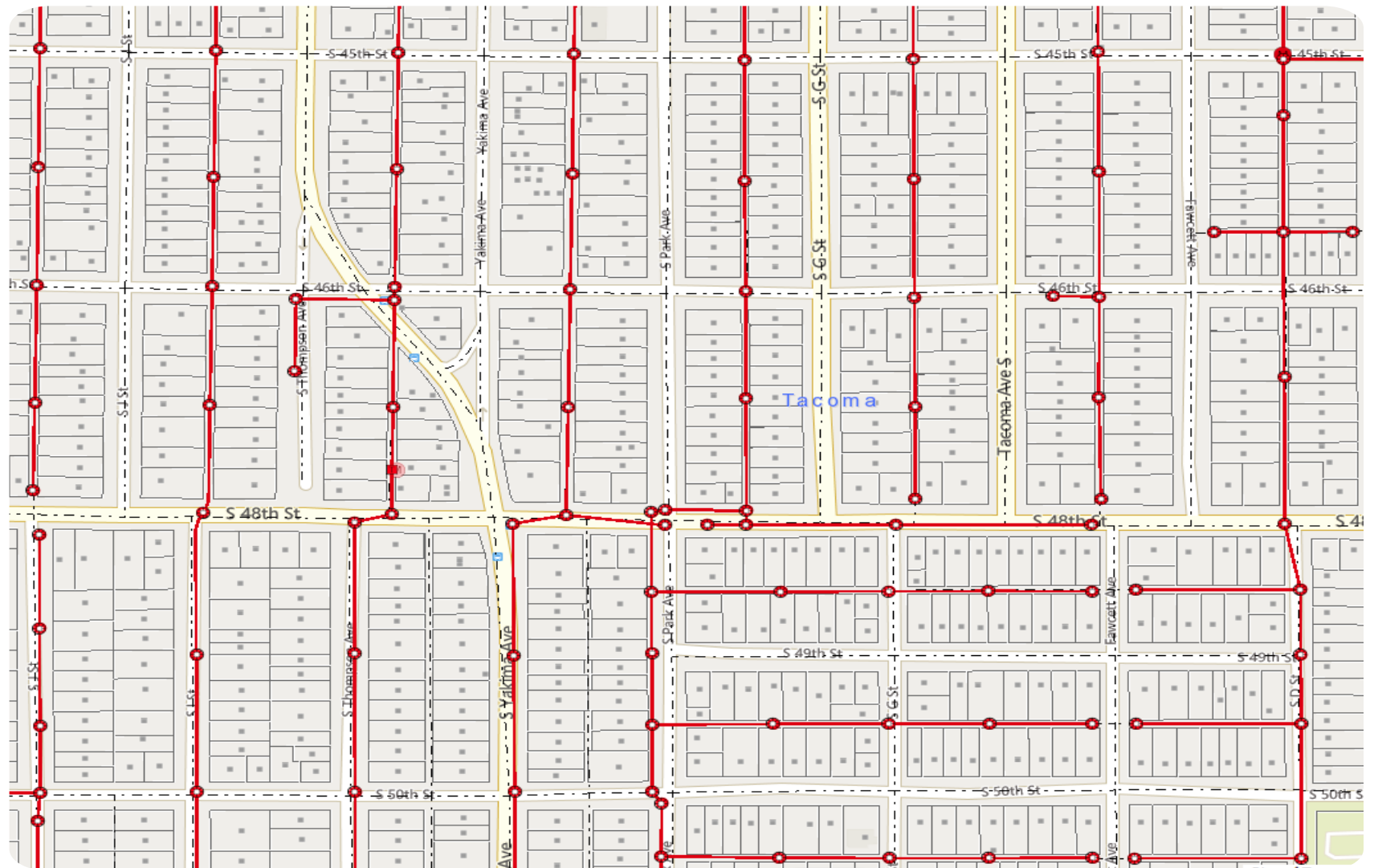
**Chambers Creek Treatment Plant**

**University Place**

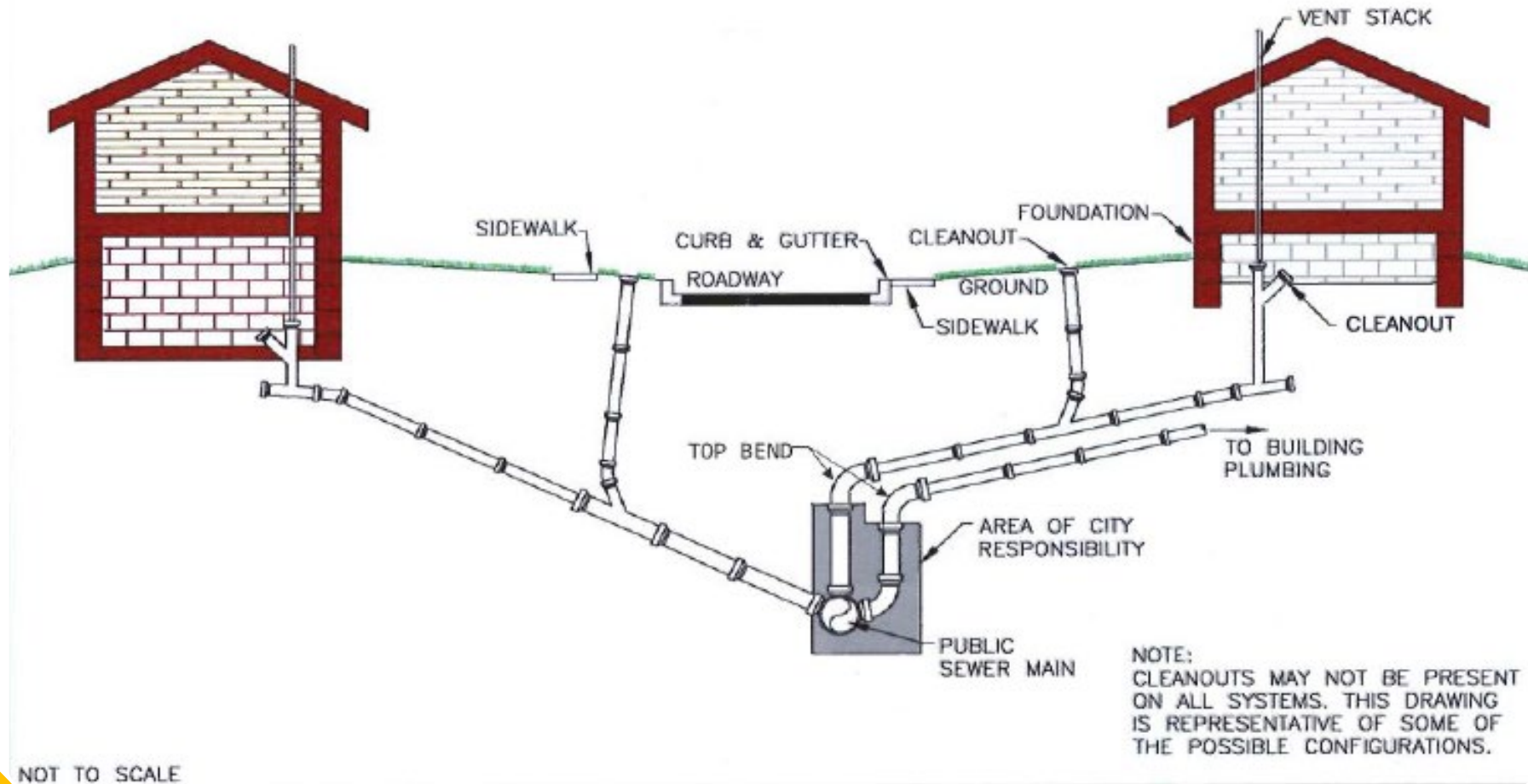
**Waller**





# System Mapping



# CITY OF TACOMA SIDE SEWER AREA OF RESPONSIBILITY



- 
- **Budget**-The Rates and Budget Team manages the financial health of the Environmental Services Department's three utilities. This includes but is not limited to budgeting and financial planning and forecasting, utility rate development, capital financing/bonding, and providing complex analyses.
  - **Engineering**-Provided technical support and design of wastewater capital projects. Run the lab and handles permit applications.
  - **Business Operations**- Provides Operational support for Environmental Services Divisions. Key points of focus include Customer Service, Environmental Compliance, TAGRO, as well as Administrative and procedural support.
  - **Operations and Maintenance**- Operates the Treatment plants, maintains equipment, pump stations and infrastructure for the wastewater utility.
- 

# Business Operations - Environmental Compliance

- **Pretreatment** – regulates industrial facilities discharging wastewater to the treatment plant. There are currently 38 permitted industrial users that discharge to the sewer system.
- **Inspections** – conducts public and private; commercial and residential stormwater and wastewater inspections and provides education and outreach as well as compliance follow-up as needed.
- **Focused Programs** – reviews permit submittals, title and license applications, and Industrial user surveys to determine applicable regulatory requirements.
- **Incident intake** - provides response to a variety of events (fires, system overflows, etc.) reported to the city by See/Click/Fix, direct reporting or other agencies.



Business  
Operations -  
Environmental  
Compliance



# Questions?

---

